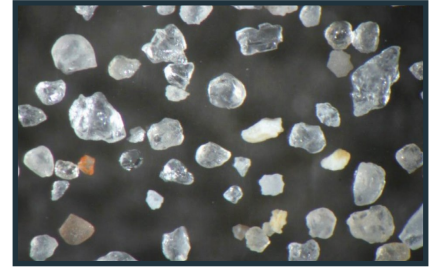




# IRON OAK

ENERGY SOLUTIONS

## PRODUCT SHEET



## EAGLE FORD REGIONAL SAND

- A leading supplier of Eagle Ford Regional sand
- Strategically located mine & processing facilities
- 18K tons of storage capacity
- High-speed truck load-out facilities

## PLANT LOCATIONS



**CARRIZO  
SPRINGS,  
TX**

~2M TPY



**POTEET,  
TX**

~2M TPY

## TYPICAL PHYSICAL AND CHEMICAL PROPERTIES

Per API STD 19C procedures

MESH SIZE	PERCENT IN-SIZE	KRUMBEIN SPHERICITY	KRUMBEIN ROUNDNESS	APPARENT DENSITY (G/CM <sup>3</sup> )	BULK DENSITY LB/FT <sup>3</sup> (LB/FT <sup>3</sup> )	ACID SOLUBILITY	TURBIDITY (FTU)	K-VALUE CRUSH STRENGTH
-----------	-----------------	---------------------	--------------------	---------------------------------------	---	-----------------	-----------------	------------------------

100 Mesh	>90%	0.6	0.6	2.65	>85.0	<3.0%	<250	7K
----------	------	-----	-----	------	-------	-------	------	----

2700 Technology Forest Blvd, Suite 100 | The Woodlands, Texas 77381 | [IronOakEnergy.com](http://IronOakEnergy.com)

Individual plant results and third-party test results are available upon request.

GRADE NUMBERS INDICATE RELATIVE VALUES OR RESULTS. THEY ARE NOT A SPECIFICATION OR WARRANTY OF PERFORMANCE.